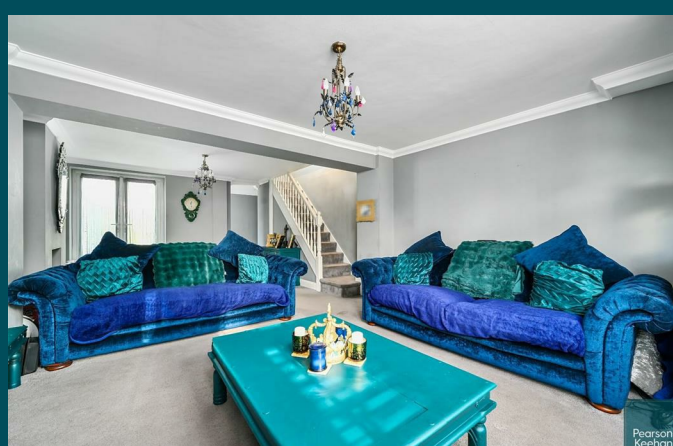
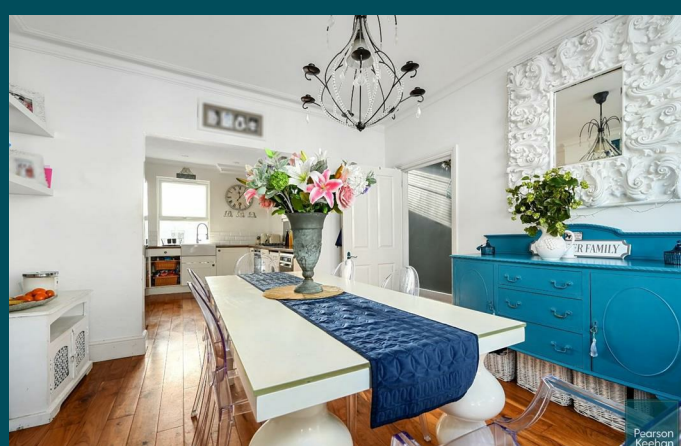
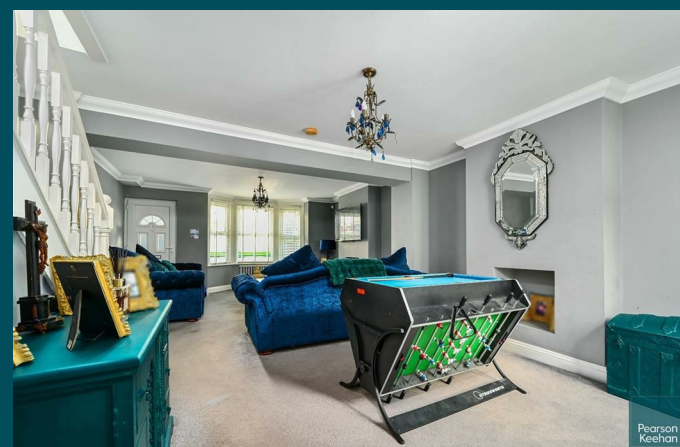
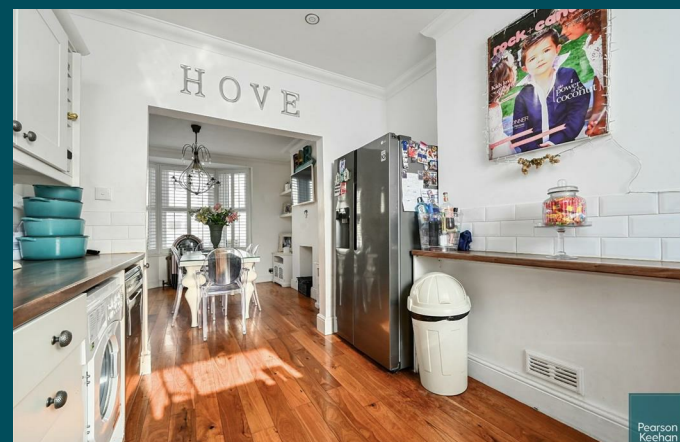




14 Wordsworth Street
Hove, BN3 5BG



14 Wordsworth Street

Hove, BN3 5BG

Asking price £750,000

A lovely and spacious three bedroom family home that spans over four storeys and is situated in the heart of the highly popular Poets Corner district of Hove. This mid-terraced house further boasts a delightful south-facing garden as well as a superb roof-terrace.

Stepping inside, the raised ground floor level provides an expansive kitchen/dining room, which offers the perfect space to entertain and dine. On the first floor, you have two good sized double bedrooms and a newly installed luxury bathroom. Occupying the whole of the top floor is the large principle bedroom and completing the accommodation on the lower ground floor is a shower room and double-length, dual aspect living room room, offering the space to relax and unwind.

Outside, the south facing garden provides sunshine all day and the rare first floor roof terrace provides a lovely place to watch the sun go down and socialise with friends and family.

Set within the Poets Corner area of Hove, Wordsworth Street is a very highly sought-after address close to a host of popular coffee shops, restaurants, supermarkets and other independent stores. Hove Beach & Hove Railway Station are just short journeys away along with a number of excellent local schools making the property ideal for families and commuters alike.

